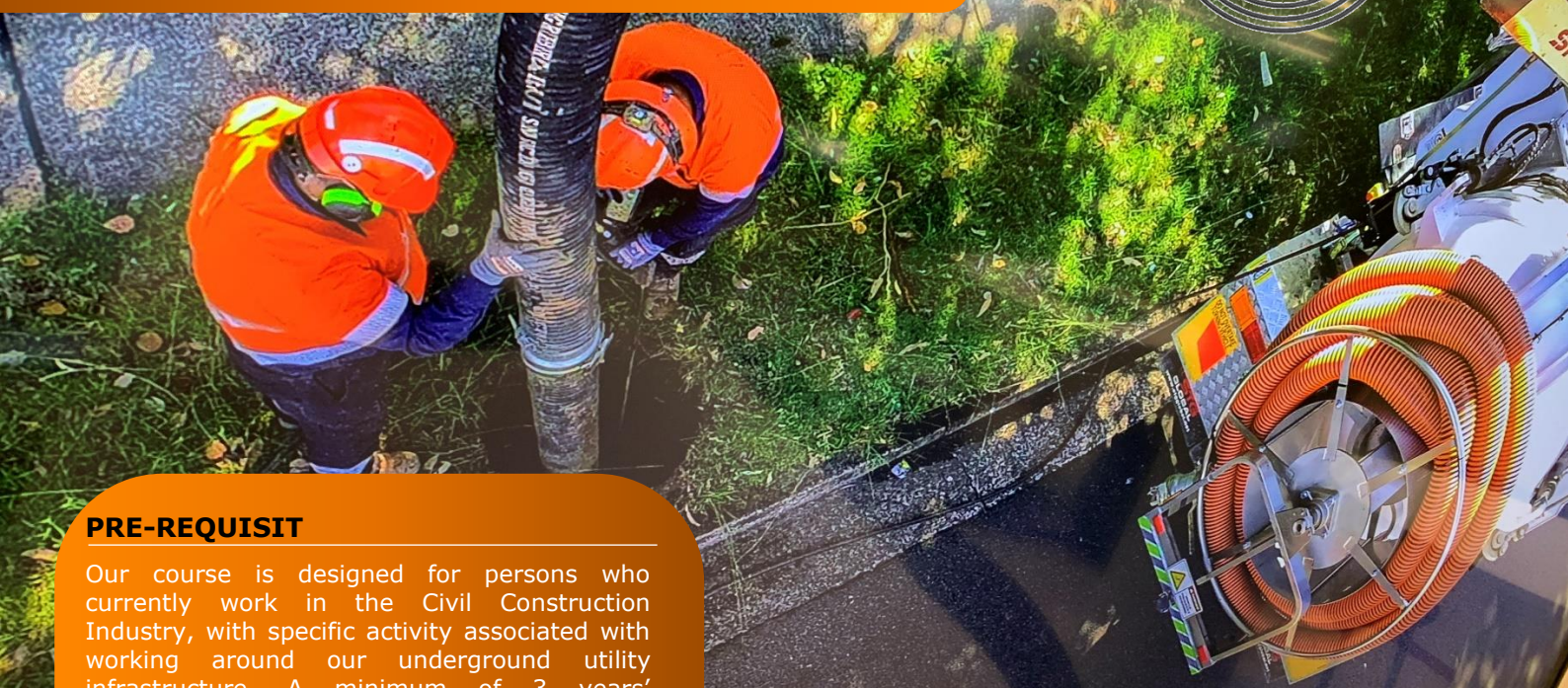


# RIICCM303 – Conduct vacuum excavations



Locating  
Unlimited



## PRE-REQUISIT

Our course is designed for persons who currently work in the Civil Construction Industry, with specific activity associated with working around our underground utility infrastructure. A minimum of 3 years' experience is ideal.

## HOW IT IS DELIVERED

Locating Unlimited uses a "Direct Assessment" method of determining the competency of the operator.

This is not your normal training; we do not expect you to spend time in a classroom. We look at your existing knowledge and skills that you have gained from the years of experience that you have achieved in the field.

## INFORMATION YOU NEED TO SUPPLY

We need to be able to verify your level of competency at doing the task. We do this by collecting evidence and mapping this evidence against the requirements of the Unit of Competency.

Some of the documentation evidence we need:

- Current Resume
- Existing qualifications
- White Card
- JSA or JSEA of a job you have done

## COST

\$295.00

## OUTCOME

On the successful completion a Statement of Attainment for: RIICCM303 – Conduct vacuum excavations will be issued.

## ARE YOU EXPERIENCED.

Vacuum excavation is a non-destructive digging technology that improves the safety of workers on site. It is more cost effective and importantly, vacuum excavation is significantly more environmentally friendly than conventional digging machinery.

Locating Unlimited (RTO – 45518) recognises the fact that many of you have a great deal of experience and have done multiple courses over the years. Rather than make you sit through classroom training of concepts that you probably use daily, we have devised a "Direct Assessment" methodology to assess your skills, identify any gaps that may be present and train to fill those gaps.

Our process requires you to provide evidence of your work history, verification of all courses that you have completed, copies of your white card, completed safety documents that you use on a daily basis, as well as 3 short videos of you carrying out vacuum excavation.

There is also a "common Sense" theory assessment to be completed – no more than about 30 minutes.

All the above is up-loaded to an easy to use "on-line" platform that take you through step by step the requirements.

Don't loose a couple of days pay sitting in a classroom "Learning" stuff that you already know – **step into the 21<sup>st</sup> century with the modern method of assessing your skills.**



Locating Unlimited Pty Ltd – RTO 45518

Phone: 0419 44 66 27

email: [studentservices@locatingunlimited.com.au](mailto:studentservices@locatingunlimited.com.au)



NATIONALLY RECOGNISED  
TRAINING